

Pneumatic Mini Sander

Model: CN-YM6



Description

CN-YM6 Pneumatic Mini Sander with various discs is designed for the sanding and polishing work, it can be used on wood and metal surface etc. Comfortable, ergonomic design, lightweight, low noise & vibration, it's the No.1 choice for sanding or polishing.

Attention

1. Before using, please first read this instruction carefully.
2. Always wear necessary protective equipment such as an eye protector, an ear protector, a face shield, a safety apron, a helmet, gloves and other necessary protective clothing. Use protective barriers where necessary.
3. The working pressure should be maintained at 5-6kg/cm². Over high air pressure will cause early wear of parts while low air pressure will lead to insufficient power.
4. The compressed air should be maintained clean and dry. The pipeline should be equipped with moisture air filter and automatic oiler, without which, it is required to add lube for every 2-3 hours when working and the lube should be maintained clean when filling.
5. The tool must be properly maintained and tested by competent and trained personnel.
6. When giving maintenance or repairs, be sure to disconnect the tool from the air line or to shut off the air line.



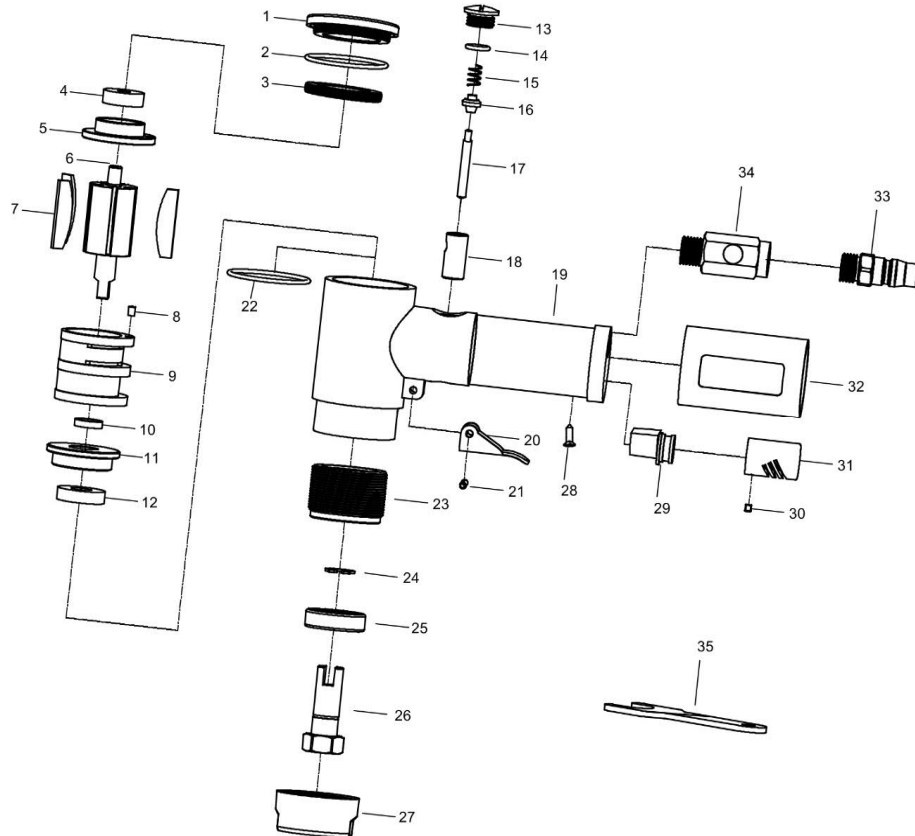
Model: CN-YM6

Pneumatic Mini Sander

Technical Data

Model	Pad Size	Free Speed	Air Pressure	Hose ID.	Noise	N.W.
Unit	mm	r/min	Mpa	mm	dB(A)	kg
CN-YM6	50/75	15000	0.50-0.63	8	94	0.82

Exploded View



Part List

No.	Description	Qty.	No.	Description	Qty.	No.	Description	Qty.
1	Body cover	1	15	Spring	1	29	Exhaust connector	1
2	O ring $\phi 33.5 \times 1.8$	1	16	Sealing ring	1	30	Screw M3x4	1
3	Lock ring	1	17	Opening and closing pin	1	31	Exhaust cover	1
4	Bearing 626ZZ	1	18	Copper cover	1	32	Rubber cover	1
5	Rear plate	1	19	Body	1	33	Quick connector	1
6	Rotor	1	20	Trigger	1	34	Adjust valve	1
7	Vane	5	21	Spring pin $\phi 3 \times 15$	1	35	Spanner 17mm	1
8	Spring pin $\phi 3 \times 4$	1	22	O ring	1			
9	Cylinder	1	23	Lock ring	1			
10	Washer	1	24	Circlip	1			
11	Front plate	1	25	Bearing	1			
12	Bearing R6Z	1	26	Rotation shaft	1			
13	Air plug	1	27	Lock nut	1			
14	O ring $\phi 8 \times 1.8$	1	28	Screw M3x6	1			