

Pneumatic Mini Sander

Model: CN-YM7



Description

CN-YM7 Pneumatic Mini Sander with various discs is designed for the sanding and polishing work, it can be used on wood and metal surface etc. Comfortable, ergonomic design, lightweight, low noise & vibration, it's the No.1 choice for sanding or polishing.

Attention

1. Before using, please first read this instruction carefully.
2. Always wear necessary protective equipment such as an eye protector, an ear protector, a face shield, a safety apron, a helmet, gloves and other necessary protective clothing. Use protective barriers where necessary.
3. The working pressure should be maintained at 5-6kg/cm². Over high air pressure will cause early wear of parts while low air pressure will lead to insufficient power.
4. The compressed air should be maintained clean and dry. The pipeline should be equipped with moisture air filter and automatic oiler, without which, it is required to add lube for every 2-3 hours when working and the lube should be maintained clean when filling.
5. The tool must be properly maintained and tested by competent and trained personnel.
6. When giving maintenance or repairs, be sure to disconnect the tool from the air line or to shut off the air line.



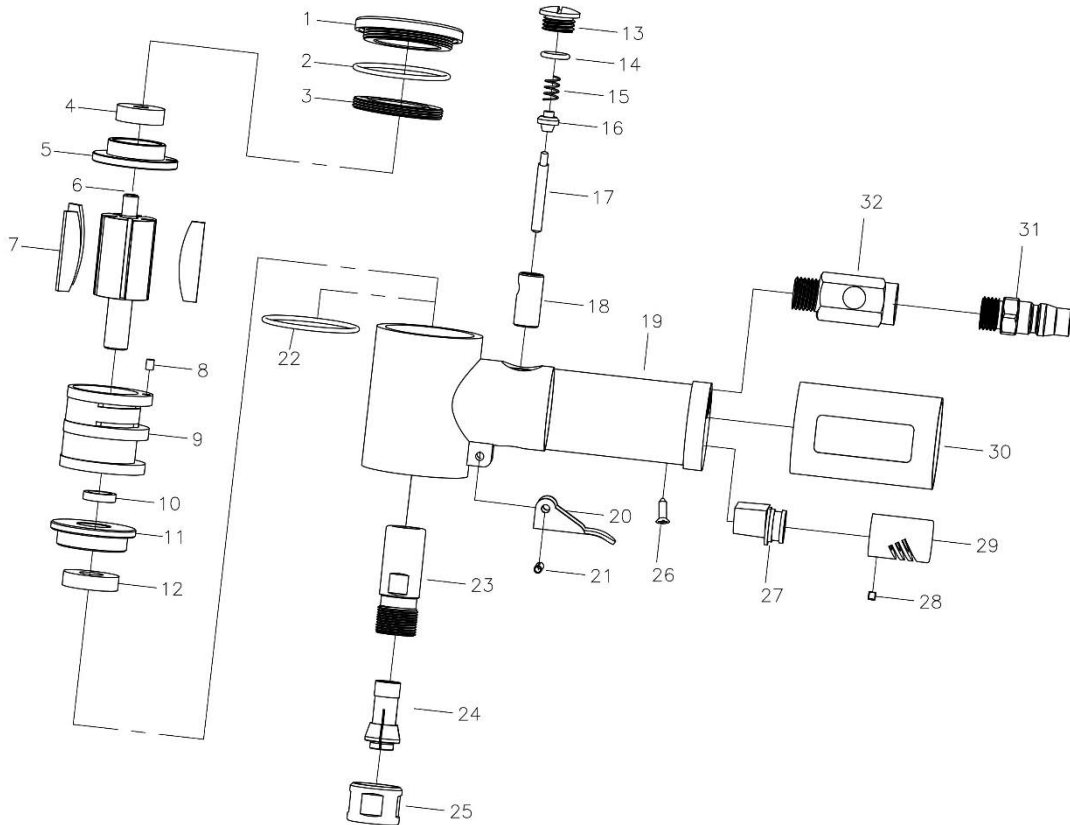
Model: CN-YM7

Pneumatic Mini Sander

Technical Data

Model	Chuck Size	Free Speed	Air Pressure	Hose ID.	Noise	N.W.
Unit	mm	r/min	Mpa	mm	dB(A)	kg
CN-YM7	3/6	15000	0.50-0.63	8	94	0.67

Exploded View



Part List

No.	Description	Qty.	No.	Description	Qty.	No.	Description	Qty.
1	Body cover	1	15	Spring	1	29	Exhaust cover	1
2	O ring ϕ 33.5x1.8	1	16	Sealing ring	1	30	Rubber cover	1
3	Lock ring	1	17	Opening and closing pin	1	31	Quick connector	1
4	Bearing 626ZZ	1	18	Copper cover	1	32	Adjust valve	1
5	Rear plate	1	19	Body	1			
6	Rotor	1	20	Trigger	1			
7	Vane	5	21	Spring pin ϕ 3x15	1			
8	Spring pin ϕ 3x4	1	22	O ring	1			
9	Cylinder	1	23	Collet holder	1			
10	Washer	1	24	Collet	1			
11	Front plate	1	25	Collet nut	1			
12	Bearing R6Z	1	26	Screw M3x6	1			
13	Air plug	1	27	Exhaust connector	1			
14	O ring ϕ 8x1.8	1	28	Screw M3x3	1			